

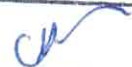


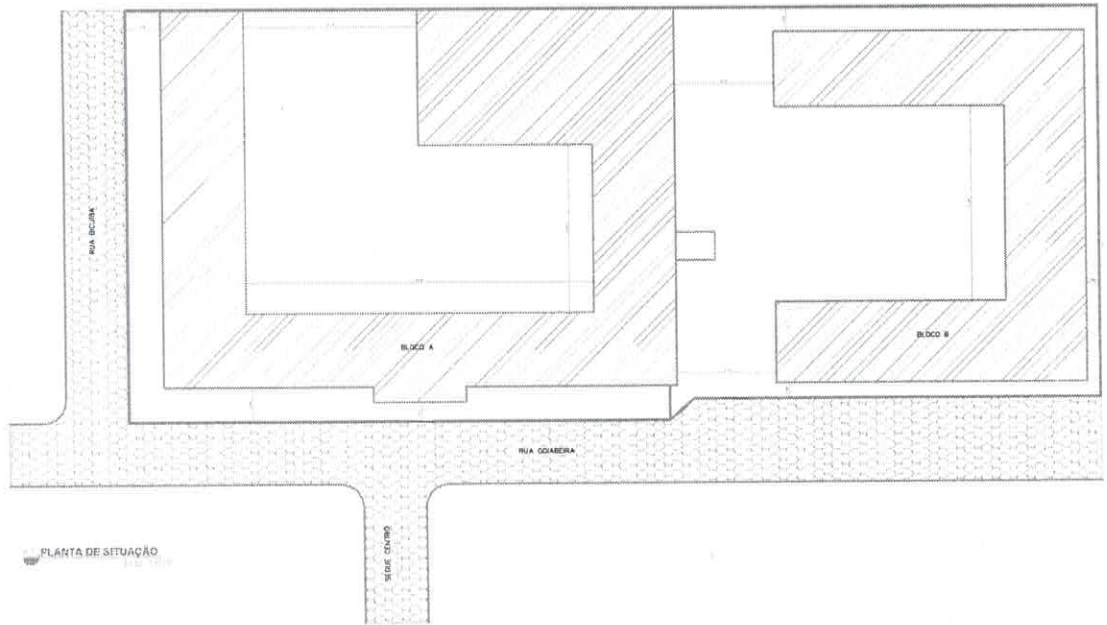
162	
Nº	Rubrica

PREFEITURA MUNICIPAL DE SOORETAMA – ES

PROJETO ARQUITETÔNICO (DWG)

**EMEF “ALVARO MARQUES DE OLIVEIRA”**

169	
Nº	Rubrica

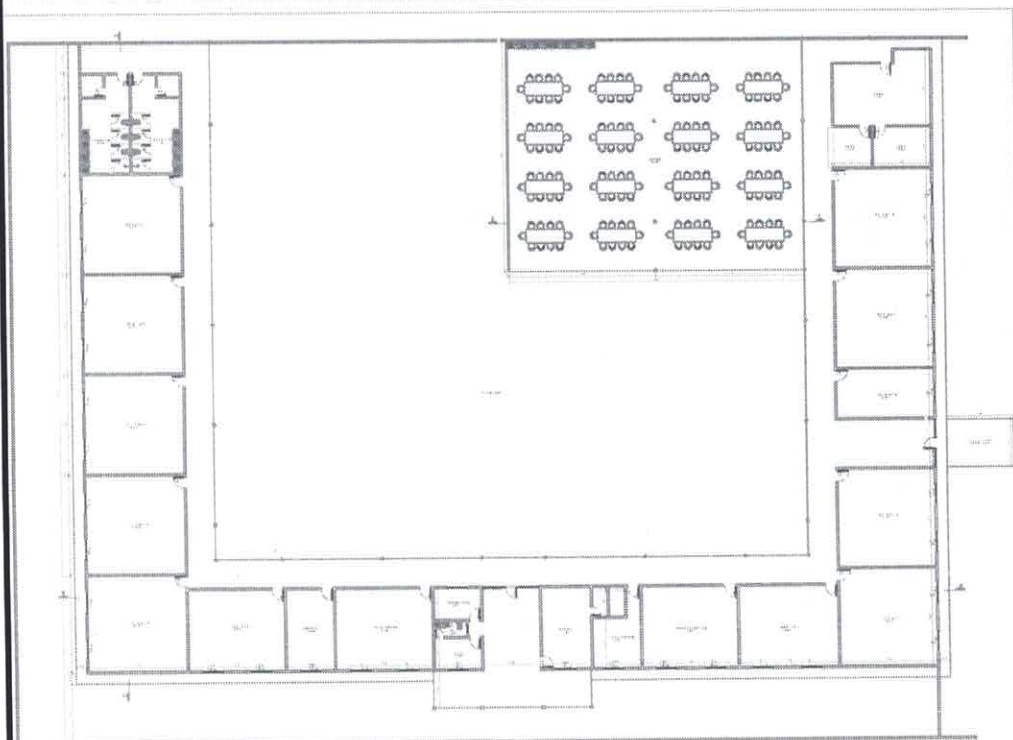


BLOCO A	1938,45m <sup>2</sup>
BLOCO B	289,74m <sup>2</sup>
ÁREA TOTAL CONSTRUÍDA	2228,19m <sup>2</sup>
ÁREA TERREÇO	6462,11m <sup>2</sup>
COEFICIENTE DE APROVEITAMENTO	32,75%
TAXA DE PERMEABILIDADE	67,25%

**ARQUITETÓNICO**  
 PREFEITURA MUNICIPAL DE SOUPELTA  
 PROJETO: EMF "A VART MARQUES"  
 LOCAL: FERRAZ DE CALVAO, SOUPELTA - ES.  
 AUTOR DO PROJETO: WENDEL S TEIXEIRA  
 ARQUITETO DE REG. Nº 10.845 - ES.  
 COORDENADOR DE PROJETO: JOSÉ E. MOUTINHO NETO  
 REG. Nº 10.845 - ES.  
 DATA: 01/06  
 ESCALA: 1:500  
 FOLHA Nº 01/06



170	
N°	Rubrica



PLANTA BAIXA - BLOCCO A

ARCHITETTONICO

PROF. EMILIO MONTALTE SORRETI

ING. ALVARO VARESI

ING. FENETRO LINEANO SORRETI

ING. MARCO DI VITO

ING. GIULIO SORRETI

ING. GIULIO SORRETI

ING. GIULIO SORRETI

ING. GIULIO SORRETI

ING. GIULIO SORRETI

ING. GIULIO SORRETI

ING. GIULIO SORRETI

ING. GIULIO SORRETI

ING. GIULIO SORRETI

ING. GIULIO SORRETI

ING. GIULIO SORRETI

ING. GIULIO SORRETI

ING. GIULIO SORRETI

ING. GIULIO SORRETI

ING. GIULIO SORRETI

ING. GIULIO SORRETI

ING. GIULIO SORRETI

ING. GIULIO SORRETI

ING. GIULIO SORRETI

ING. GIULIO SORRETI

ING. GIULIO SORRETI

ING. GIULIO SORRETI

ING. GIULIO SORRETI

ING. GIULIO SORRETI

ING. GIULIO SORRETI

ING. GIULIO SORRETI

ING. GIULIO SORRETI

ING. GIULIO SORRETI

ING. GIULIO SORRETI

ING. GIULIO SORRETI

ING. GIULIO SORRETI

ING. GIULIO SORRETI

ING. GIULIO SORRETI

ING. GIULIO SORRETI


ING. GIULIO SORRETI

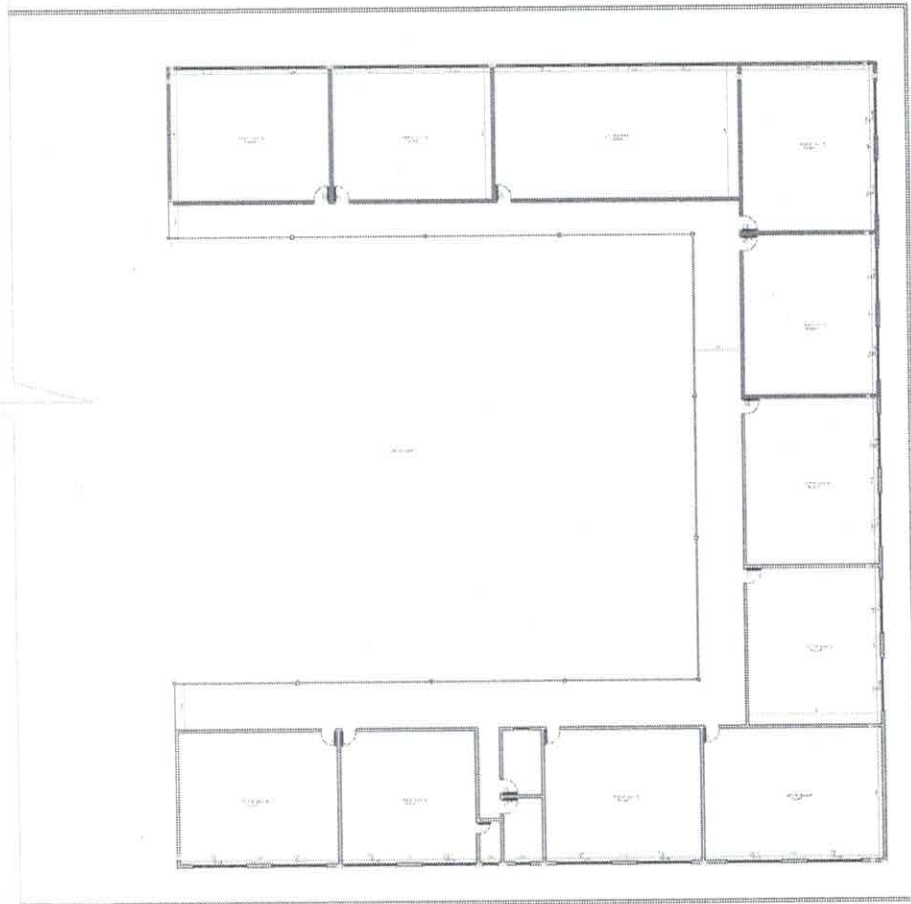
ING. GIULIO SORRETI

ING. GIULIO SORRETI

ING. GIULIO SORRETI

ING. GIULIO SORRETI

173	
Nº	Rubrica



PLANTA BAIXA - BLOCO B



PROJ.  
ARQ.  
COR.  
COR.  
COR.  
COR.  
COR.  
COR.

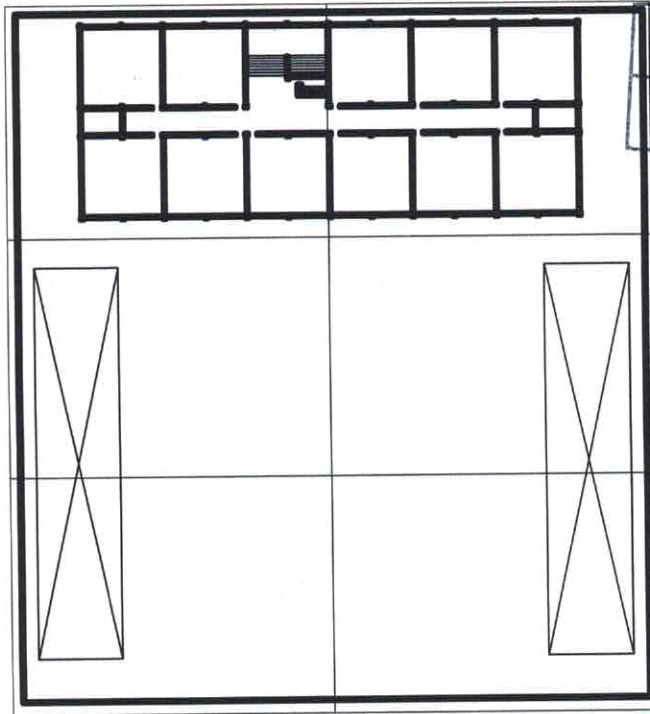


172	
Nº	Rubrica

PREFEITURA MUNICIPAL DE SOORETAMA – ES

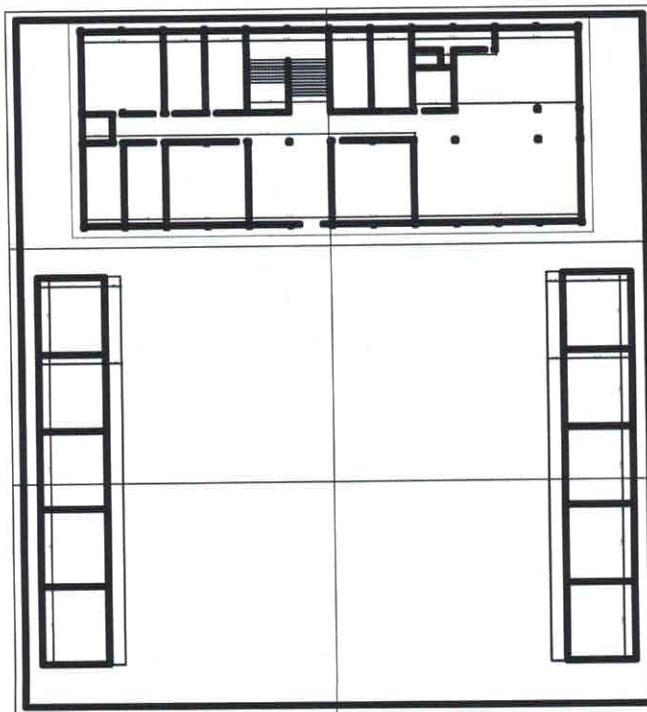
PROJETO ARQUITETÔNICO (DWG)

**EMEF “ALBERTO STANGE JUNIOR”**

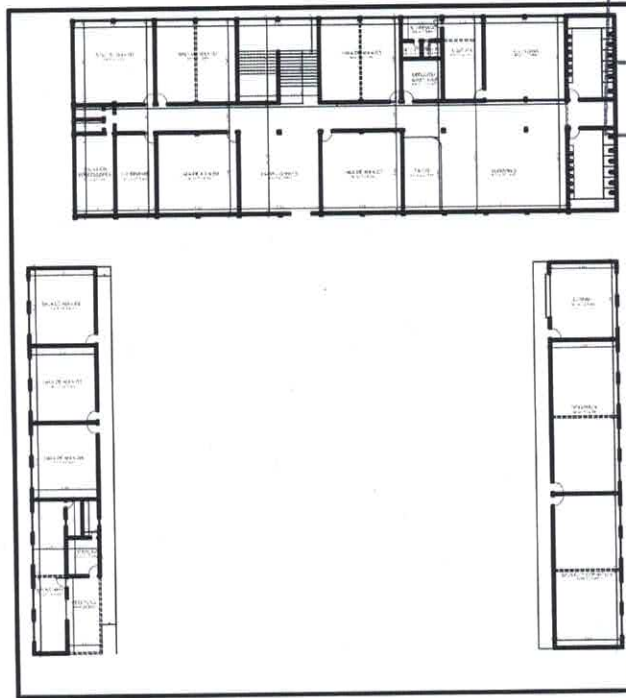


173	<i>ck</i>
Nº	Rubrica

PLANTA ATUAL  
2º PAVIMENTO

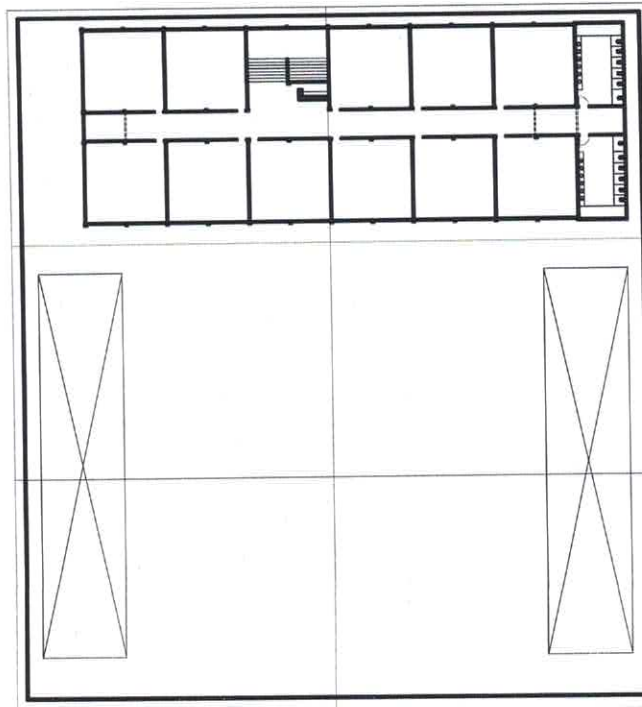


PLANTA ATUAL  
TÉRREO



174	<i>ca</i>
Nº	Rubrica

PLANTA PROPOSTA  
TÉRREO



PLANTA PROPOSTA  
2º PAVIMENTO





125	
Nº	Rubrica

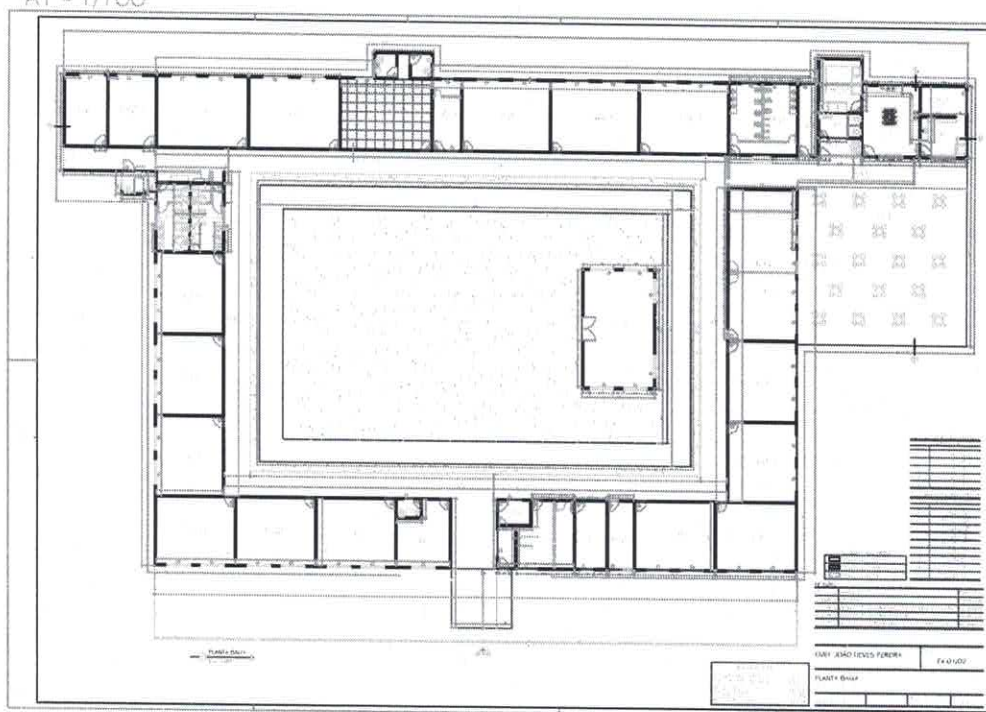
PREFEITURA MUNICIPAL DE SOORETAMA – ES

PROJETO ARQUITETÔNICO (DWG)  
**EMEF “JOÃO NEVES PEREIRA”**



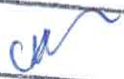
170	<i>ck</i>
N°	Rubrica

AI - 1/100

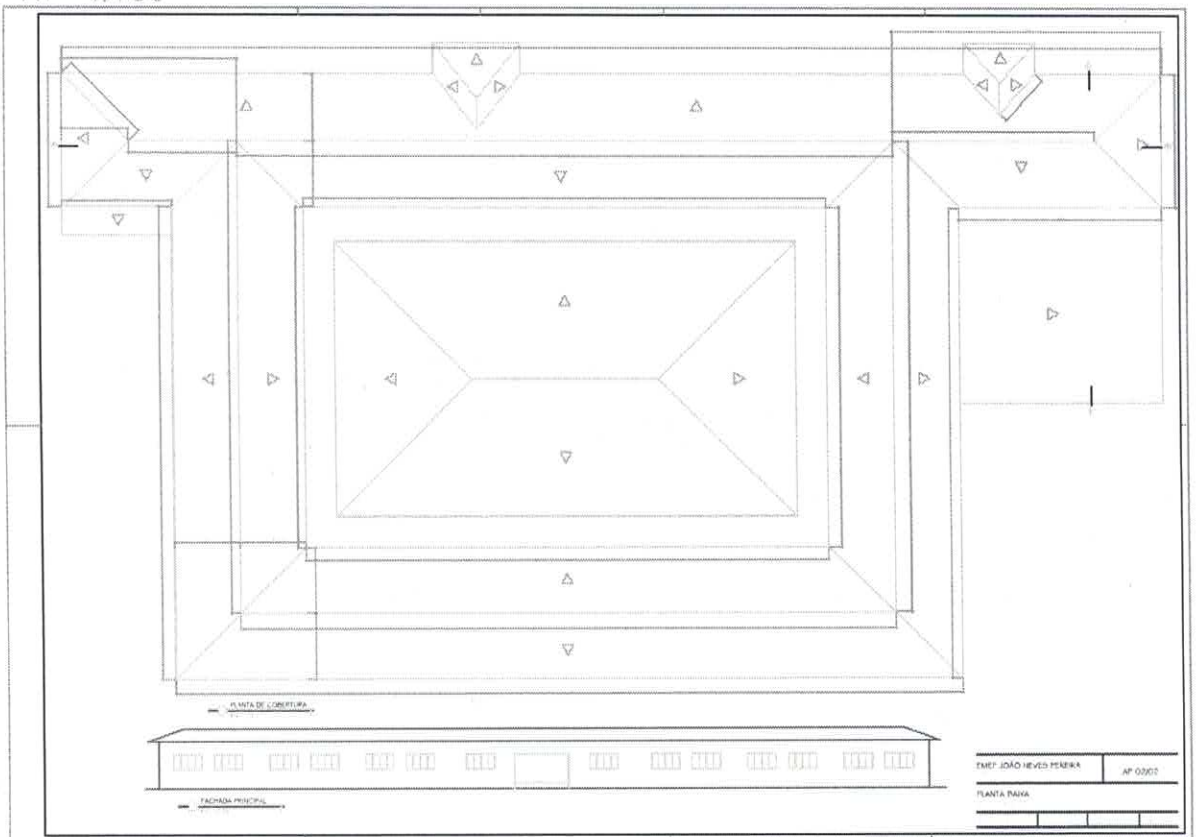


AI

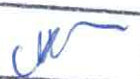
PROGETTO ARCHITETTURA  
 SCALE: 1/100  
 DATA: 19/10/2000

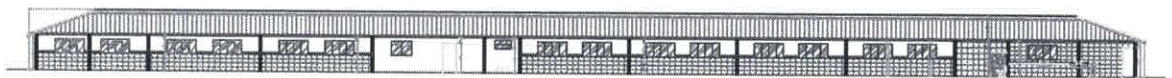
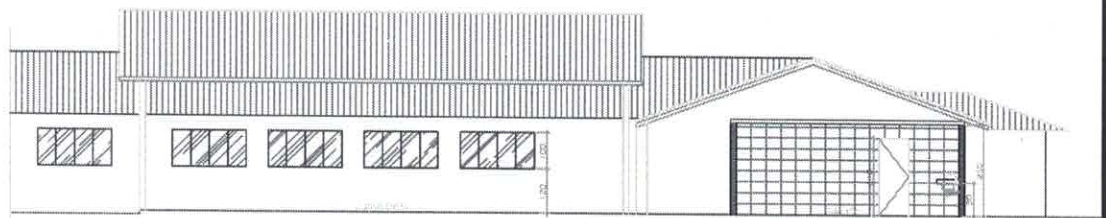
177	
Nº	Rubrica

A1 - 1/100



EMP. JOÃO NEVES PEREIRA	AP. 0302
PLANTA PAIS	

178	
Nº	Rubrica




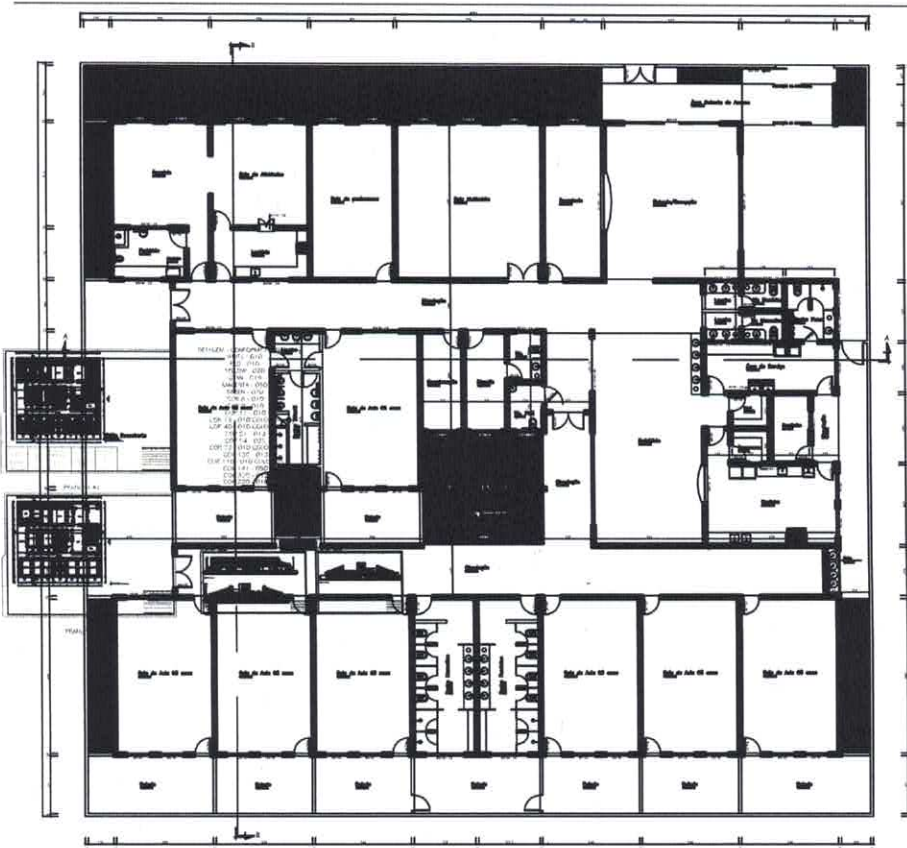


129	
Nº	Rubrica

PREFEITURA MUNICIPAL DE SOORETAMA – ES

PROJETO ARQUITETÔNICO (DWG)  
**CEIM “ANÍZIO DE ALMEIDA”**


120	
Nº	Rubrica

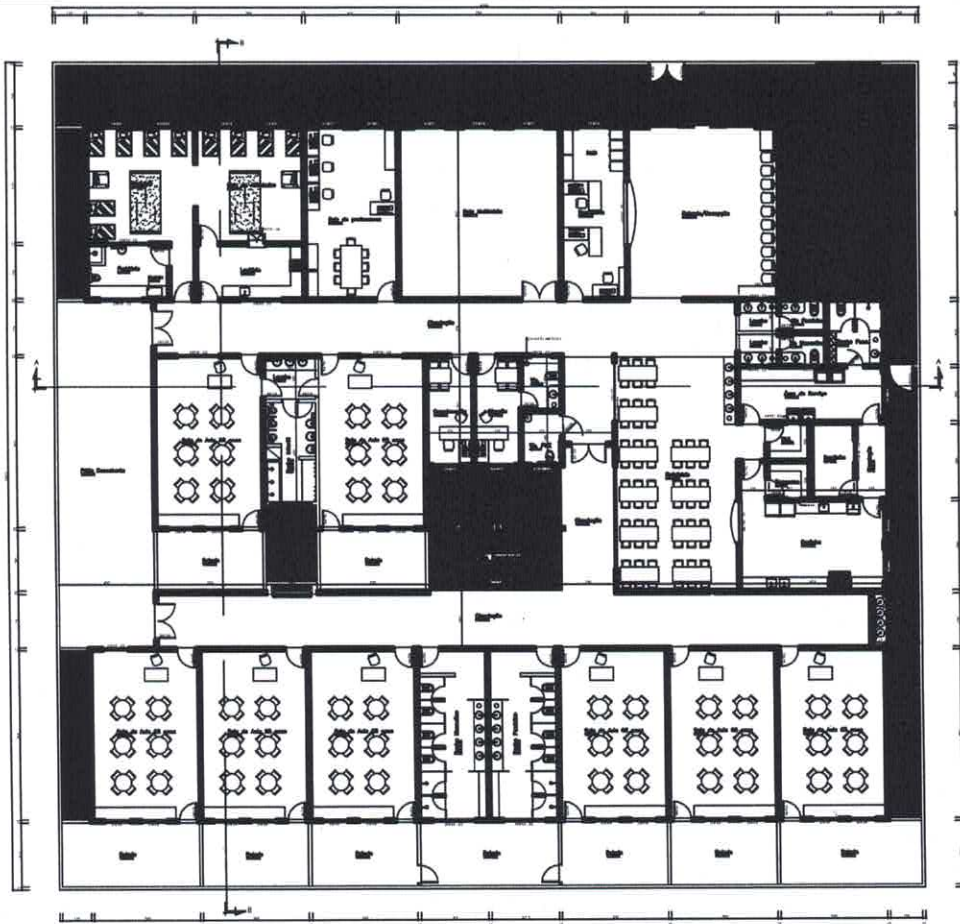


PLANTA BAIXA



PLANTA II

182	
Nº	Rubrica



PLANTA BAIXA - LAY OUT



182	ck
Nº	Rubrica

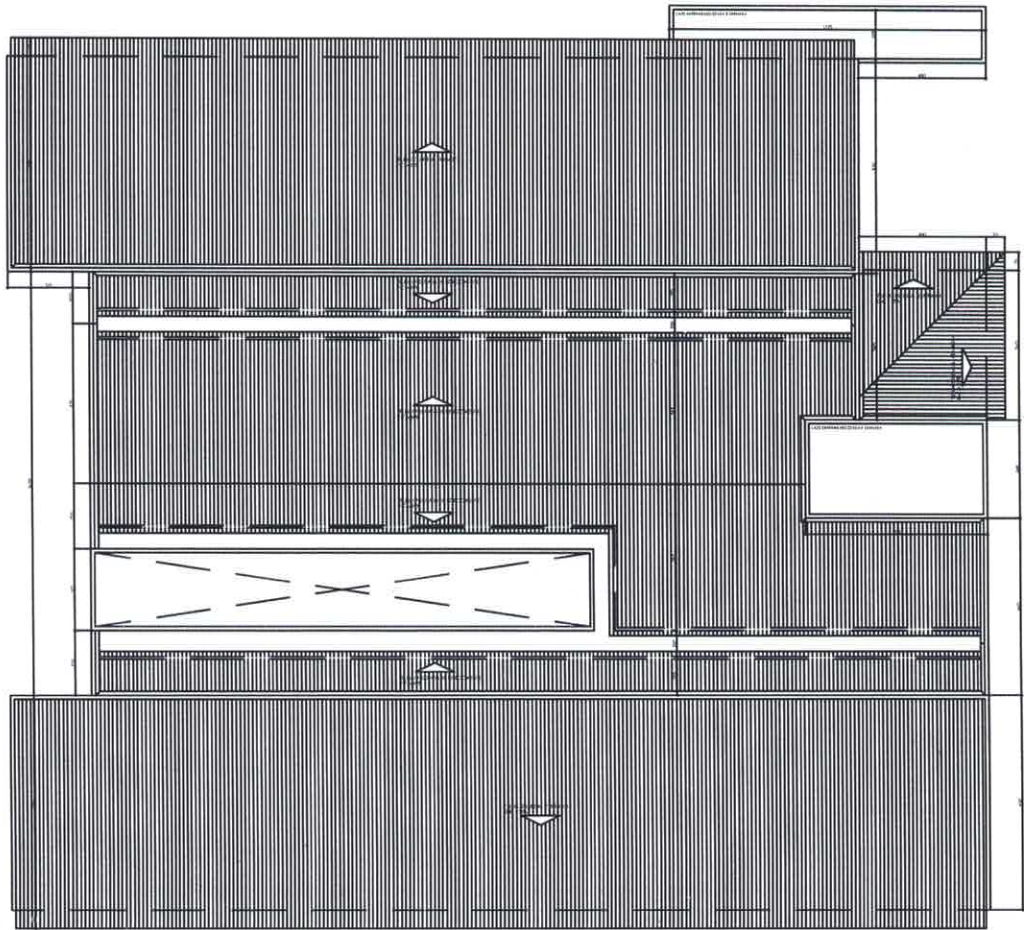

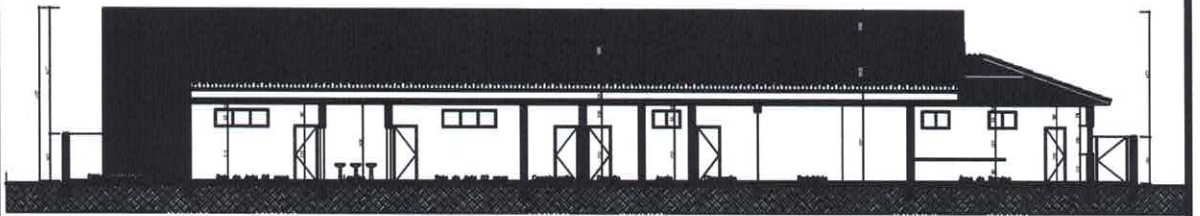


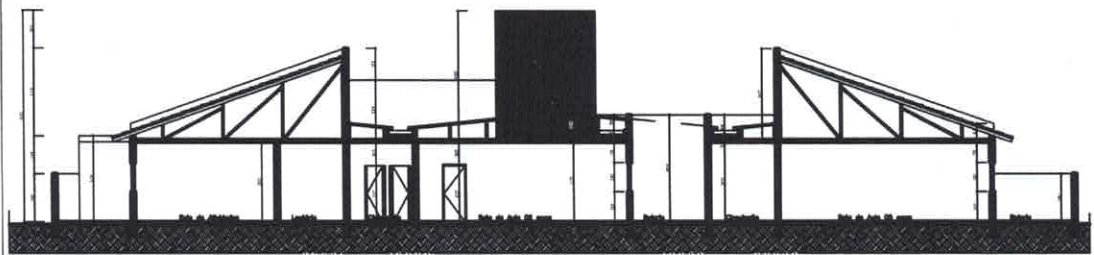
DIAGRAMA DE COBERTURA



183	
Nº	Rubrica



CORTE A



CORTE B

PREFEITURA MUNICIPAL DE MURIL  
 PROJETO: CENTRO DE CRIANÇAS  
 LOCAL: PARQUE SÃO CARLOS  
 DATA: 15/05/2011  
 ESCALA: 1/50

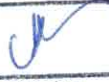


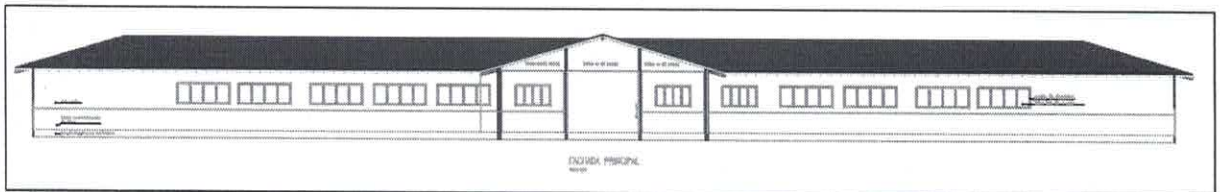
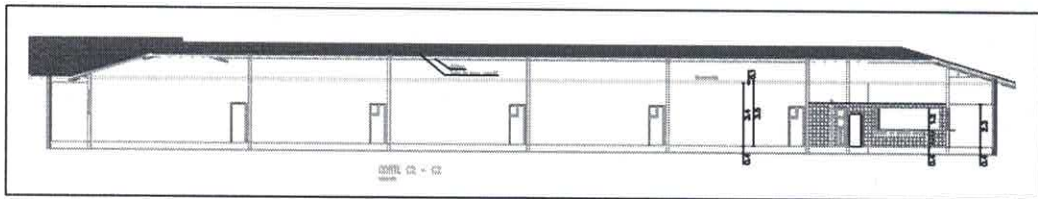
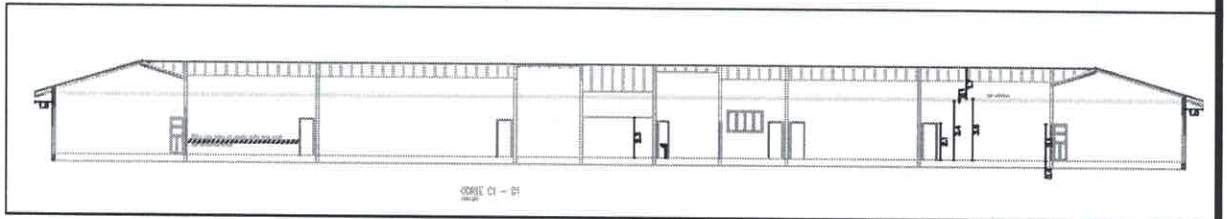
184	
Nº	Rubrica


PREFEITURA MUNICIPAL DE SOORETAMA – ES

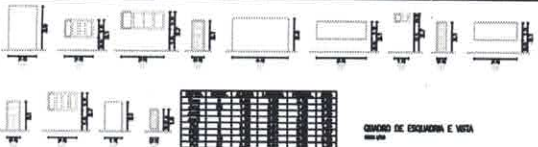
PROJETO ARQUITETÔNICO (DWG)

**EMEF “PEDRO BALBINO DE MENEZES”**

185	
Nº	Rubrica



186	
Nº	Rubrica



**QUADRO DE ESCALONIA E VOTA**

Escalonia	Vota
1	1
2	2
3	3
4	4
5	5
6	6
7	7
8	8
9	9
10	10
11	11
12	12
13	13
14	14
15	15
16	16
17	17
18	18
19	19
20	20
21	21
22	22
23	23
24	24
25	25
26	26
27	27
28	28
29	29
30	30
31	31
32	32
33	33
34	34
35	35
36	36
37	37
38	38
39	39
40	40
41	41
42	42
43	43
44	44
45	45
46	46
47	47
48	48
49	49
50	50
51	51
52	52
53	53
54	54
55	55
56	56
57	57
58	58
59	59
60	60
61	61
62	62
63	63
64	64
65	65
66	66
67	67
68	68
69	69
70	70
71	71
72	72
73	73
74	74
75	75
76	76
77	77
78	78
79	79
80	80
81	81
82	82
83	83
84	84
85	85
86	86
87	87
88	88
89	89
90	90
91	91
92	92
93	93
94	94
95	95
96	96
97	97
98	98
99	99
100	100

